



1 GUARD *plus!*

DHAS

DANTZIGUIAN HRAYR
Automation Systems sarl

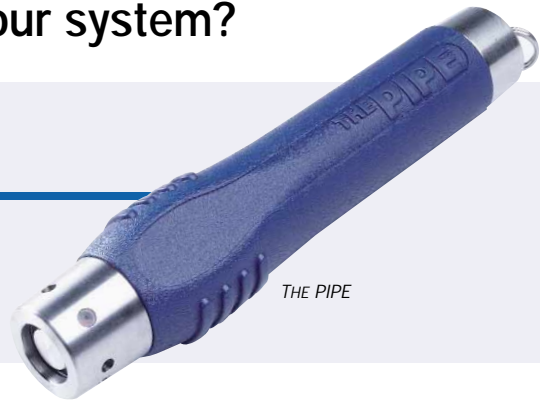
TimeKeeping
Systems, Incorporated

Solutions for Security Professionals

What do you need from your guard tour system?

"Our current system is too unreliable.
We just need a really rugged watchclock."

If you've been faced with frequent downtime or expensive repairs, THE PIPE, our rugged guard tour data collector, is your solution. Designed for heavy use and the most difficult environments, THE PIPE will withstand rough handling and accidental damage that other readers cannot.



THE PIPE

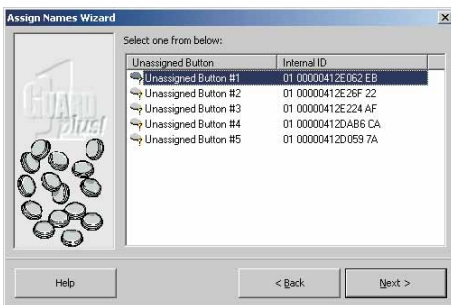
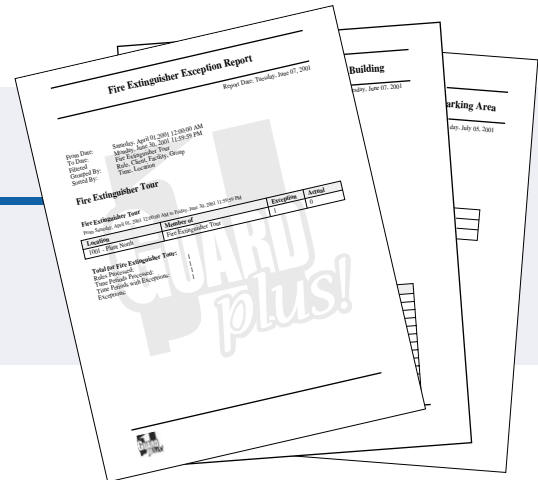


"We already have a lot of money
invested in guard tour equipment."

If you'd like to move up to the advanced features of GUARD1 PLUS software, or the ruggedness and reliability of THE PIPE, now you can. GUARD1 PLUS works with readers from Detex/GCS, Deister, and Morse Watchman. You can continue to use your existing equipment, and replace your readers with THE PIPE as your budget permits.

"We want to improve the
professionalism of our department."

GUARD1 PLUS produces professional-looking reports using Microsoft Word. You can select from a variety of report styles, add your logo to your reports, and print cover sheets for the reports you provide to your clients or management.

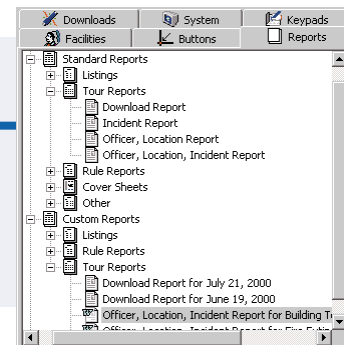


"We're not computer experts.
We need a system that's easy to use."

GUARD1 PLUS makes extensive use of wizards to help you get up and running fast, and to assist you with many of the basic program functions. GUARD1 PLUS was designed with extensive on-line documentation and an easy-to-understand interface, to make all of its many features — basic and advanced — readily accessible to all users.

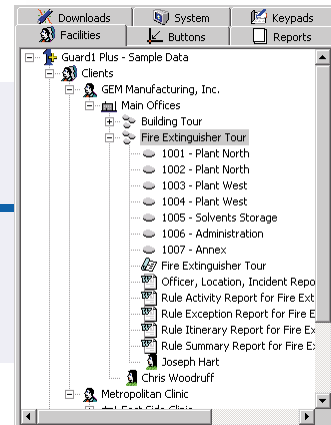
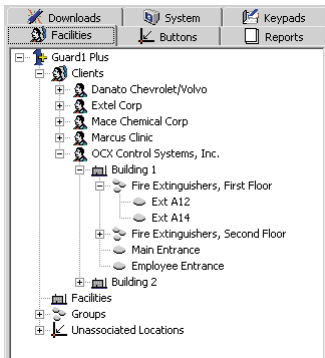
"We just need to know if our officers made all their patrols."

With GUARD1 PLUS, simply download THE PIPE and print the reports you need. GUARD1 PLUS offers a variety of useful reports, including exception reports that show whether your officers made the required number of visits, and detailed reports when you need to analyze your information in greater detail.



"We are a corporate security department with several buildings and a variety of patrol requirements."

GUARD1 PLUS organizes your information the way you do. You can create multiple facilities and special patrols for each, such as weekend or holiday patrols, fire extinguisher and safety checks, supervisor tours, and more.



"We're a guard company. We need to manage information for multiple clients."

GUARD1 PLUS handles an unlimited number of different clients. Each client can have multiple facilities. With GUARD1 PLUS's batch reporting feature, you can print all of your regular client reports with a single selection.

"Our supervisors make post visits. We need to track whether our officers are at their posts."

GUARD1 PLUS makes it easy to set up supervisor patrols, track whether officers were at their posts, and record other pertinent information. With the Mobile Downloader, supervisors can even download officers' PIPEs and bring the information back to a central location for downloading.



"We need to record numeric information, like room numbers or meter settings."

With our optional keypad module, buttons represent digits 0 to 9, Enter and Clear. You can enter numbers for any location or event.



"Some of our officers are located at distant sites."

GUARD1 PLUS offers advanced support for remote devices, including the Modem Downloader. Setup is easy, too. GUARD1 PLUS's Add Devices Wizard can automatically detect and configure your remote downloader.



GUARD1 PLUS Hardware

Data Collection Devices

THE PIPE

At TimeKeeping Systems, we have offered guard tour solutions since 1987. During that time, we have become familiar with the kind of heavy use and — sometimes — abuse that a watchclock receives. THE PIPE was developed to meet the industry's need for a rugged data recorder.

The World's Most Rugged Data Collector

THE PIPE was designed for the most *rugged* use and the toughest environments. Many readers used in competitive guard tour systems were designed for general use. THE PIPE was specifically designed for guard tour use. It will withstand extreme temperatures and heavy shock.

What Makes THE PIPE So Durable?

The answer is in the details.

THE PIPE is made of corrosion-resistant #304 stainless steel alloy. This gives it many times the strength of plastic or aluminum. The case is sealed, making it tamper-resistant and waterproof.

All of THE PIPE's electronics are embedded in epoxy resin for additional protection against shock and moisture.

Batteries are encased in a special rubber sleeve and all battery connections are welded — there are no spring loaded terminals to deform and fail over time.

Even the ring at the end of THE PIPE is a special heavy-duty split ring.

Other Helpful Design Features

THE PIPE is powered by lithium batteries and does not have any of the problems associated with rechargeable batteries. There is no downtime waiting for batteries to recharge, so THE PIPE is available 24 hours a day. A backup battery protects your data even if the main battery fails.



Downloading is fast. THE PIPE downloads at 115,200 baud — faster than any other reader. A full PIPE — over 4,800 reads — downloads in under ten seconds. There's no waiting for data to transfer before you can put THE PIPE back into service.

THE PIPE's grip is comfortably designed to fit your hand. It won't roll around on a table or an automobile dashboard.

When it reads a button, THE PIPE emits an audible beep. A red LED also lights, which is useful in a noisy factory or outdoor environment.

You're in Good Company

THE PIPE is used by thousands of companies and organizations throughout the world. It is the preferred and recommended product for many of the largest guard companies in the United States and worldwide. These companies have been using THE PIPE to provide the accountability a professional security organization requires.

The Best Warranty in the Industry

All of these details really do make a difference, and they make it possible for us to offer a three-year hardware warranty and a one-year battery warranty. Our warranty is *the best in the industry*.

Why settle for less?

Touch Memory Buttons and Mounts

THE PIPE reads durable metal touch memory buttons. Each button contains a microchip with a unique ID number. Tour locations, officers, and incident codes can all be recorded using touch buttons.

Buttons are attractive and unobtrusive, making them equally suitable for corporate headquarters and industrial environments. They are highly tamper-resistant and are perfect for outdoor use because they will not corrode or degrade.

We offer a variety of standard and tamper-resistant mounting options for buttons. Our standard button mounts, included with GUARD1 PLUS systems, provide excellent protection from abuse or vandalism. An optional cover



THE PIPE reads durable metal touch memory buttons.



Tamper-resistant wall mount button holder.

is available to protect the button from water or oil. Double-sided adhesive foam disks are also available, for use in conjunction with button mounts, or where a simpler, less secure mount is sufficient.

Originally designed for use in correctional facilities, our Prison-Proof™ Buttons and Mounts have stood the test of time in the toughest environments.

Stainless steel checkpoints are ideal for correctional institutions or abuse-prone locations.



Cover for wall mount button holder provides weather protection.



Downloaders

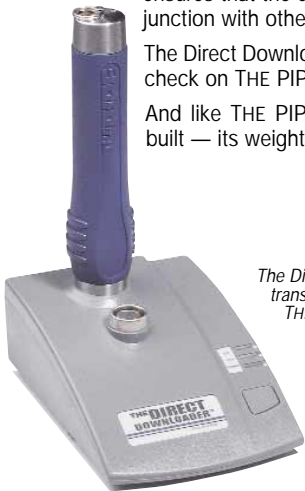
The Direct Downloader

The Direct Downloader transfers data between THE PIPE and your PC via the computer's serial port. It supports data transfer rates of up to 115,200 baud.

A button port allows you to read buttons directly to your PC. This simplifies setup or the addition of new buttons. The Direct Downloader supports Plug and Play, which simplifies installation and ensures that the downloader will work properly in conjunction with other Windows devices.

The Direct Downloader's pushbutton performs a power check on THE PIPE's battery.

And like THE PIPE, the Direct Downloader is sturdily built — its weighted base will not tip over.



The Direct Downloader transfers data between THE PIPE and your PC.

The Modem Downloader

The Modem Downloader is a simple solution for transferring data from small satellite offices, guard shacks, and other places where a PC is not available.

The only requirements are an external modem and a phone line. GUARD1 PLUS manages all the details, calling the remote site and downloading data stored in the Modem Downloader's memory.

The Modem Downloader automatically detects and downloads THE PIPE, storing the data in its memory. This allows THE PIPE to be returned to service immediately.



Transfer data from remote sites with the Modem Downloader.

The Mobile Downloader

The Mobile Downloader is ideal for supervisory or mobile patrols, where it is necessary to gather data from PIPEs at multiple locations. Since it is powered from a wall jack or automobile cigarette lighter, a supervisor or officer can visit multiple locations and download data from THE PIPE at each location. This allows THE PIPE to be returned to service immediately.

The Mobile Downloader stores the gathered data until it can be returned to a central office, where the accumulated data is transferred to a PC.

The Mobile Downloader stores up to 7,200 button reads. A lithium battery provides protection against data loss for up to ten years.



Download THE PIPE in the field — onsite or even in an automobile — with the Mobile Downloader.

Accessories

Nylon Belt Holster for THE PIPE

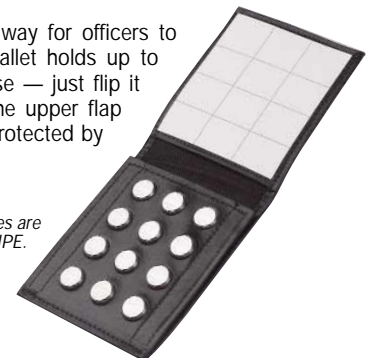


Our holster is made of ballistic nylon with an easy-open Velcro closure. It holds THE PIPE securely and provides an attractive, professional appearance.

Leather Wallet for Touch Buttons

The button wallet is an ideal way for officers to carry incident buttons. The wallet holds up to twelve buttons. It's easy to use — just flip it open and read. A card on the upper flap identifies each button and is protected by clear vinyl.

A variety of accessories are available for use with THE PIPE.



GUARD1 PLUS Software

GUARD1 PLUS Overview

Easy-to-Use Software with Advanced Features

GUARD1 PLUS is the latest in a series of guard tour software products from TimeKeeping Systems. It offers a wide range of advanced and innovative features:

Hardware Support

- True 24-hour-a-day unattended downloading
- Automatic detection of readers
- Remote downloading
- Works with Detex, Deister, and Morse Watchman readers

Reports

- Professional reports using Microsoft Word
- Flexible, powerful rules-based reporting
- Exception reports identify missed locations
- Custom reports and batch reports
- Support for pictures and maps

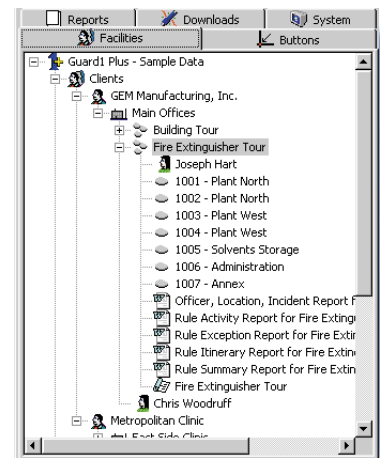
Ease of Use

- Extensive online documentation
- Easy-to-understand interface
- Simple setup
- Sample database for easy learning
- Free 30-day trial version

Easy to Understand

GUARD1 PLUS features a user interface that handles your data the same way you do. It is organized much like the Windows Explorer that is part of Windows 95, 98, 2000 and XP. Information is displayed in a tree view, where clients can have multiple buildings or facilities.

You can create special groups of buttons for any purpose, such as weekend patrols, fire extinguisher checks, and mobile patrols. Your contact information, reports, and other details are kept together with each client or facility, so you can quickly find the information you need.



GUARD1 PLUS organizes your data the same way you do.

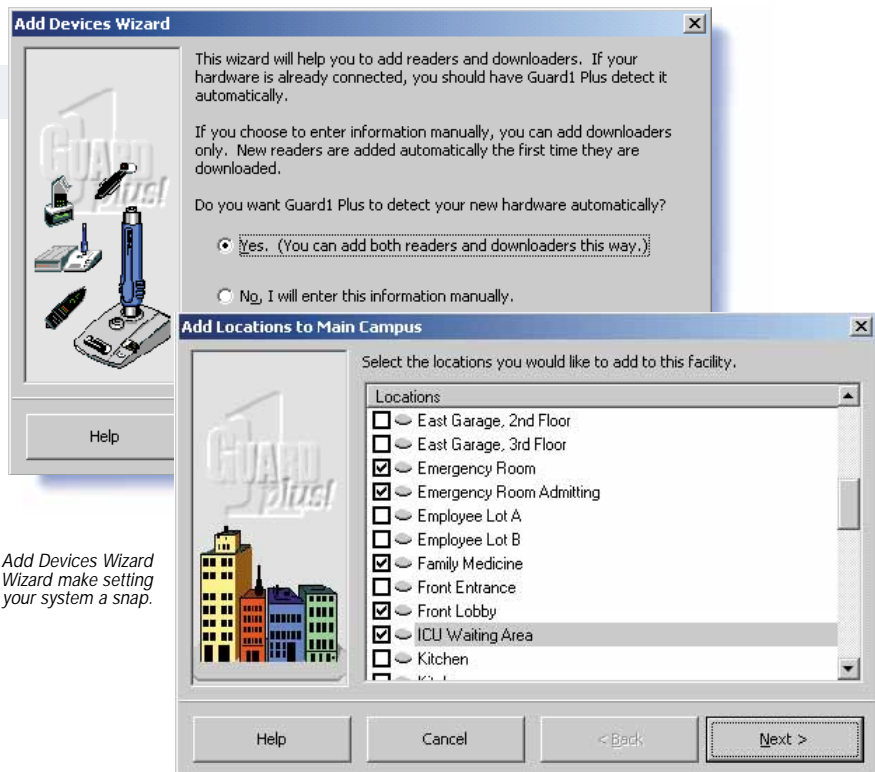
Ease of Use Features

Simple to Set Up

With GUARD1 PLUS, setup is simple. Wizards take you through the setup steps one by one. For many users, setting up communication between the reader and the PC is one of the most difficult steps. GUARD1 PLUS automatically detects your readers and downloaders, and automatically configures port settings and other details.

For tasks like adding and defining buttons, GUARD1 PLUS has wizards to add clients, facilities, and locations.

Wizards like the Add Devices Wizard and Add Locations Wizard make setting up your system a snap.

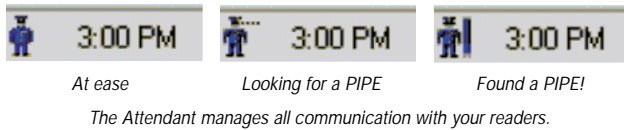


Hardware Support

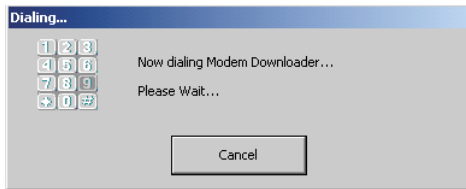
The Attendant

One of GUARD1 PLUS's unique and innovative features is the Attendant. The Attendant manages all downloading and works even when GUARD1 PLUS is not active.

The Attendant provides true 24-hour-a-day unattended downloading. It will automatically detect THE PIPE and other readers as they are placed in the downloader. Officers can download THE PIPE without requiring access to the GUARD1 PLUS program.



The Attendant provides robust support for all of your remote downloading needs. It works with the Modem Downloader — making or receiving calls — and with the Mobile Downloader. It automatically detects Mobile Downloaders and incoming modem calls from readers at remote sites.



GUARD1 PLUS provides complete support for downloading remote devices.

Support for Detex/GCS, Deister, and Morse Devices

GUARD1 PLUS supports the equipment you already own. In addition to THE PIPE, GUARD1 PLUS and the Attendant support readers from Detex/GCS, Deister, and Morse Watchman. You can use any combination of PIPEs and other devices.

You may wish to use THE PIPE because of its durability and other features, but have a large capital investment in readers and equipment from another manufacturer. With GUARD1 PLUS you can continue to use these readers, replacing them with THE PIPE when they are no longer worth repairing.

Adding these devices is easy — the Add Devices Wizard automatically finds and configures all of these readers, even those at remote locations.



Preserve your investment in other manufacturers' equipment. GUARD1 PLUS supports all of these devices.

Ease of Use Features

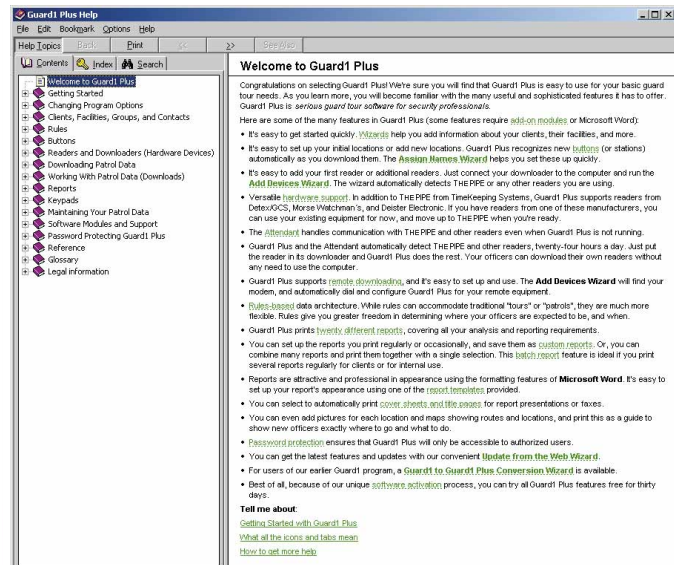
Online Documentation

When you need help, it's nice to know that it's available. All of GUARD1 PLUS's extensive documentation has been included in online help. The documentation includes a tutorial that takes you through all of GUARD1 PLUS's major features.

Sample Database

Included with GUARD1 PLUS is a sample database, with realistic information. You can use, learn, and experiment with all of GUARD1 PLUS's features without affecting your own data. If you make a mistake, simply delete the sample database and GUARD1 PLUS will rebuild it for you.

GUARD1 PLUS features extensive online documentation.



GUARD1 PLUS Features

Advanced Features

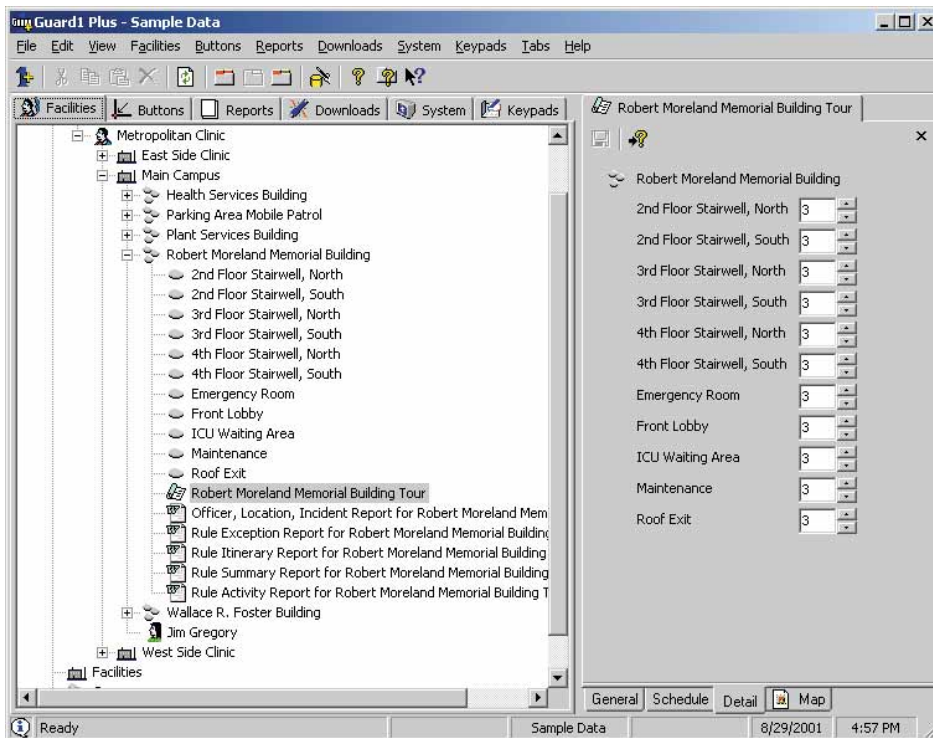
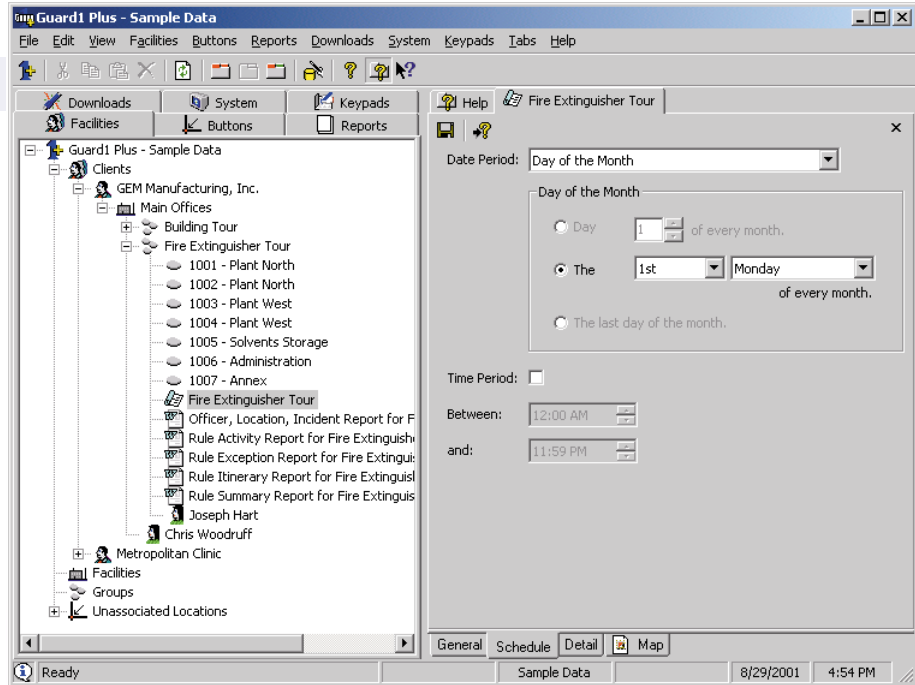
Groups

One of the most powerful features of GUARD1 PLUS is its ability to create a collection of locations — known as a "group". A group can contain almost any locations that require special review or attention:

- Fire extinguisher tours
- Room checks in a hotel or school
- Mobile or supervisor patrols
- Separate weekday, weekend, or holiday patrols

GUARD1 PLUS makes it easy to create new groups with the Add Locations Wizard.

Create fire extinguisher checks, mobile patrols, and more, with groups — one of GUARD1 PLUS's most powerful features.



Create a rule to define the number of visits required during a particular time period.

Rules

Rules are another powerful feature of GUARD1 PLUS. Rules act as "filters" for your patrol data. With rules, you can examine patrol activity for specific locations, groups of locations, facilities or clients, and generate reports that show the data you have selected.

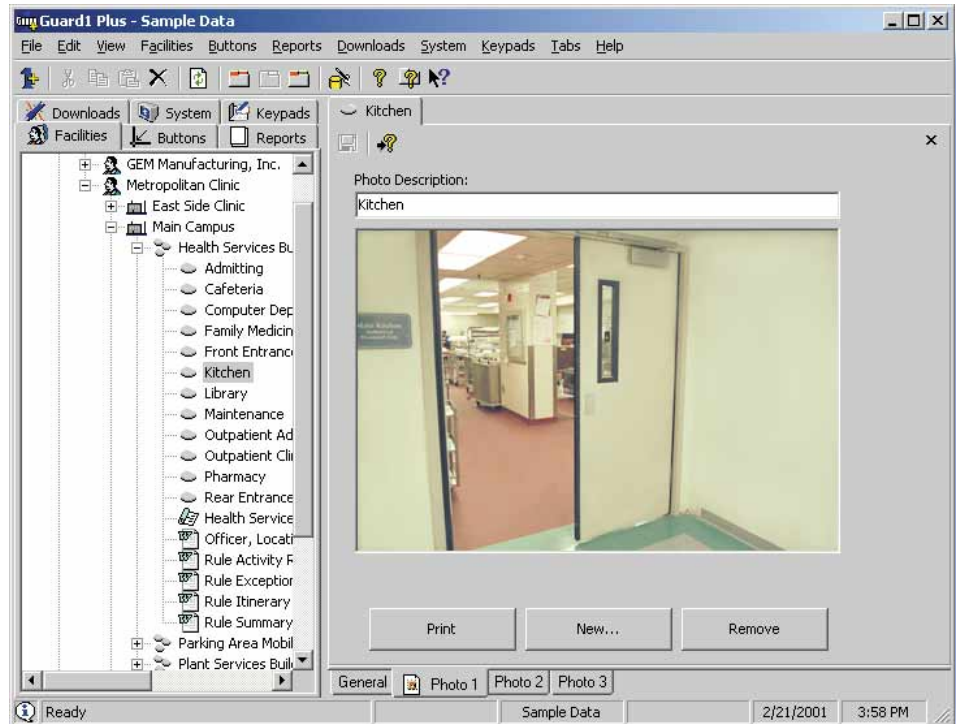
Rules allow you to specify the number of visits required to a group of locations during a specific period. You can then generate reports showing actual vs. expected visits, including exception reports.

For example, if you are required to perform monthly safety checks of equipment such as emergency lighting or fire extinguishers, you can create a rule that specifies the locations and time frame for these checks.

Pictures and Maps

GUARD1 PLUS also supports pictures and maps. You can use a digital camera and save pictures of the locations where your buttons are mounted. Then print a guide for new officers, showing exactly where to go, and where to find each checkpoint.

Photos and maps show your new officers exactly where to go.

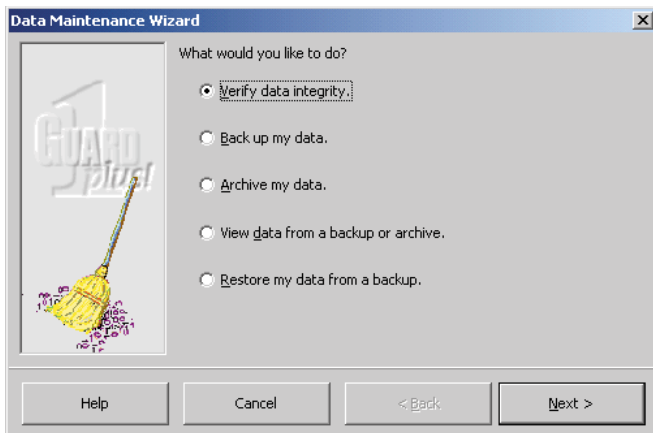


Keypad Module

Data Maintenance

Backing up your data on a regular schedule is important. GUARD1 PLUS backs up your data to any location — including CD-ROM or network drives. GUARD1 PLUS also reminds you to perform your backups on a schedule you select.

But GUARD1 PLUS's data maintenance features do more than just manage your backups. You can save older information in an archive for later viewing, reducing the size of your master data file and improving performance, while always allowing you to examine the older data and generate reports.



A keypad module, available separately, makes it possible for you to enter numeric data into GUARD1 PLUS. The keypad is a set of twelve buttons, carried in a button wallet, with values 0 to 9, Enter and Clear. By touching these buttons in sequence (1 - 5 - 3 - 2 - Enter, for example) you can input data for room numbers, meter readings, special incident codes, and more.



Enter numeric data with the keypad module.

GUARD1 PLUS Reports

Professional Reports Using Microsoft Word

Easy-to-Use Software with Advanced Features

Improve the image of your company or department by providing professional-looking reports to your clients or management. GUARD1 PLUS is integrated with Microsoft Word to provide attractive, professional-looking reports. You can even add your company logo and a custom watermark, and reports are available in a variety of styles. GUARD1 PLUS also prints fax and report cover sheets, and you can send GUARD1 PLUS's reports via e-mail.

Flexible, Powerful Report Generation

Filter your information in a variety of ways, and look at information for a specific set of locations, a specific officer, or a date range you select.

GUARD1 PLUS's reporting works in close association with GUARD1 PLUS's rules and groups features. Create special reports for your customers, different facilities, mobile patrols, fire extinguisher tours — whatever your requirements — and save the report for later re-use. Once you have created a group (fire extinguishers or mobile patrol locations, for example) or a rule (specifying details like the number of visits expected), you can create related reports, such as detail or exception reports.

Once you have set up and saved your report, it can be used as often as necessary. GUARD1 PLUS lets you select date ranges like "last week" or "last month", so you don't have to set up a date range each time you print a saved report.

Rule Exception Report for Fire Extinguisher Tour

From Date: Tuesday, March 06, 2001 12:00:00 AM
 To Date: Wednesday, September 05, 2001 11:59:59 PM
 Filtered By: Fire Extinguisher
 Grouped By: Rule, Client, Facility, Group
 Sorted By: Time, Location

Fire Extinguisher Tour

Fire Extinguisher Tour
 From Sunday, April 01, 2001 12:00:00 AM to Saturday, June 30, 2001 11:59:59

Location	Member of	Expected	Actual
1001 - Plant North	Fire Extinguisher Tour	1	0
1002 - Plant North	Fire Extinguisher Tour	1	0
1003 - Plant West	Fire Extinguisher Tour	1	0
1004 - Plant West	Fire Extinguisher Tour	1	0
1005 - Solvents Storage	Fire Extinguisher Tour	1	0
1006 - Administration	Fire Extinguisher Tour	1	0
1007 - Annex	Fire Extinguisher Tour	1	0

Fire Extinguisher Tour
 From Sunday, July 01, 2001 12:00:00 AM to Saturday, September 30, 2001 11:59:59

Location	Member of	Expected	Actual
1001 - Plant North	Fire Extinguisher Tour	1	0
1002 - Plant North	Fire Extinguisher Tour	1	0
1003 - Plant West	Fire Extinguisher Tour	1	0
1004 - Plant West	Fire Extinguisher Tour	1	0
1005 - Solvents Storage	Fire Extinguisher Tour	1	0
1006 - Administration	Fire Extinguisher Tour	1	0
1007 - Annex	Fire Extinguisher Tour	1	0

Total for Fire Extinguisher Tour: 1
 Rules Processed: 2
 Time Periods Processed: 2
 with Exceptions: 14

Rule Itinerary Report for Robert Moreland Memorial Building Tour

Location	Member of	Expected
2nd Floor Stairwell, North The button is on the handrail post on the landing between floors.	Robert Moreland Memorial Building	3
2nd Floor Stairwell South The button is on the handrail post on the landing between floors.	Robert Moreland Memorial Building	3
3rd Floor Stairwell, North The button is on the handrail post on the landing between floors.	Robert Moreland Memorial Building	3
3rd Floor Stairwell South The button is on the handrail post on the landing between floors.	Robert Moreland Memorial Building	3
4th Floor Stairwell, North The button is on the handrail post on the landing between floors.	Robert Moreland Memorial Building	3
4th Floor Stairwell, South The button is on the handrail post on the landing between floors.	Robert Moreland Memorial Building	3

Moreland Building Stairwell

Exception Reports

Find out what was missed and identify problems quickly with GUARD1 PLUS's exception reports.

Batch Reports

If you print a lot of reports regularly, save them together as a batch report. Then you can print the whole set of reports with a single selection.

Button Listing

This report provides a list of all buttons in GUARD1 PLUS. Alternate versions of this report show only locations, officers, incidents, or unassigned buttons.

Download Report for June 19, 2001

From Date: Tuesday, June 19, 2001 12:00:00 AM
 To Date: Tuesday, June 19, 2001 11:59:59 PM
 Sorted By: Time

Date	Time	Type	Description
6/19/2001	00:06	Officer	Gerald Bass
	00:07		Chris Dubojcz
	00:10	Location	Kitchen
	00:13		South Entrance
	00:15		Cafeteria
	00:16		Family Medicine
	00:23		Maintenance
	00:35		Staff Entrance
	00:39		Admitting
	00:41		Front Entrance
	00:43		Pharmacy
	00:50		Laboratory Services
	00:55		North Entrance
	01:04		Library
	01:06		Computer Department
	01:10		Roof
	01:20		Outpatient Administration
	01:20		Outpatient Clinic
	01:25		2nd Floor North Stairway
	01:28		Accounting
	01:32		Rear Entrance
	01:40		Maintenance
	01:43		2nd Floor South Stairway
	01:57		Boiler Room
	02:04		Emergency Room
	02:11		Transformer Room
	02:12		Maintenance Office
	02:17		Receiving Area
	02:17		Front Lobby
	02:30		ICU Waiting Area
	02:36		Oxygen Storage
	02:39		Bus Shelter
	02:45		Roof Exit
	02:51		2nd Floor Stairwell North



Download Report

Shows all downloads of your patrol data.

Incident Report

Shows the incidents in your patrol data. You can filter the data to show only incidents reported by specific officers, or at specific locations, or specific incidents, or by time.

Button Listing

Grouped By: Client, Facility, Group
 Sorted By: Time

Location Buttons

Name	Id Number	Type	Notes
1001 - Plant North	01 00000412D9CB 56	Button	The fire extinguisher is located inside the emergency exit.
1002 - Plant North	01 0000035E33B8 78		The fire extinguisher is located on the wall near the men's room doorway.
1003 - Plant West	01 000002BCBE65 34		The fire extinguisher is located just inside the door way to shipping/receiving.
1004 - Plant West	01 00000412CE9A 62		The fire extinguisher is located by the employee's entrance.
1005 - Solvents Storage	01 000002BC9927 86		The fire extinguisher is located just outside the solvent storage area.
1006 - Administration	01 000002BCB8B3 DE		The fire extinguisher is located in the main hallway.
1007 - Annex	01 000001C4A928 76		The fire extinguisher is located in the main hallway.
2nd Floor North Stairway	01 00000412C81B 23		The button is on the pipe by the radiator.
2nd Floor South Stairway	01 00000412DECO FF		The button is located by the door to the stairway above the old key box.
3rd Floor Stairwell, South	01 000001724753 F6		The button is on the handrail post on the landing between floors.
3rd Floor Stairwell, North	01 0000017248CC 0C		The button is on the door frame on the right hand side

Incident Report

GEM Manufacturing

From Date: Monday, June 18, 2001 12:00:00 AM
 To Date: Monday, June 18, 2001 11:59:59 PM
 Filtered By: Fire Extinguisher Tour
 All Officers
 All Incidents
 Grouped By: Client, Facility, Group
 Sorted By: Time

Main Offices

Fire Extinguisher Tour

GEM Manufacturing, Inc. Main Offices Fire Extinguisher Tour

Date	Time	Officer	Location	Incident
6/18/2001	09:15	Danny Bosworth	1001 - Plant North	Gauge is nominal (15 - 20 PSI)
	09:34		1002 - Plant North	Gauge is nominal (15 - 20 PSI)
	09:52		1003 - Plant West	Gauge is nominal (15 - 20 PSI)
	10:15		1004 - Plant West	Gauge is nominal (15 - 20 PSI)
	10:23		1005 - Solvents Storage	Spill noted and reported
	10:34		1006 - Administration	Gauge is nominal (15 - 20 PSI)

Statistics for Fire Extinguisher:
 Incident Reads: 6

Statistics for Main Offices:
 Incident Reads: 6

Statistics for Report:
 Total Incident Reads: 6



GUARD1 PLUS Reports

Sample Reports

GUARD1 PLUS provides a wide variety of reports

Officer/Location Report

Shows officers and the locations they visited during their patrols. You can filter the data to show patrols made by specific officers, or specific locations, or by time.

Officer, Location Report for Parking Area Mobile Patrol

Metropolitan Clinic
310 Lakeland Drive
Cleveland, Ohio 44101
Phone: (216) 555-4300
Fax: (216) 555-4416

From Date: Monday, June 05, 2001 12:00:00 AM
To Date: Monday, June 05, 2001 11:59:59 PM
Filtered By: Parking Area Mobile Patrol
All Officers
All Incidents
Client, Facility, Group
Time

Grouped By:
Sorted By:

Main Campus
310 Lakeland Drive
Cleveland, Ohio 44101
Phone: (216) 555-4300
Fax: (216) 555-4416

Parking Area Mobile Patrol
Metropolitan Clinic • Main Campus • Robert Moreland Memorial Building

Date	Time	Officer	Location
6/5/2001	00:07	Chris Duboicz	
	07:05		East Garage, 1st Floor
	07:06		East Garage, 2nd Floor
	07:24		East Garage, 3rd Floor
	07:36		Emergency Room Admitting
	07:46		North Garage, 1st Floor
	07:49		Employee Lot A
	08		
	08		
	08		
	17		
	20		
	21		
	21		

Officer/Location/Incident Report

Shows officers, the locations they visited during their patrols, and any incidents reported. You can filter the data to show patrols made by specific officers, or specific locations visited, or specific incidents, or by time.

Officer, Location, Incident Report for Robert Moreland Memorial Building

Metropolitan Clinic
310 Lakeland Drive
Cleveland, Ohio 44101
Phone: (216) 555-4300
Fax: (216) 555-4416

From Date: Monday, June 05, 2001 12:00:00 AM
To Date: Monday, June 05, 2001 11:59:59 PM
Filtered By: Robert Moreland Memorial Building
All Officers
All Incidents
Client, Facility, Group
Time

Grouped By:
Sorted By:

Main Campus
310 Lakeland Drive
Cleveland, Ohio 44101
Phone: (216) 555-4300
Fax: (216) 555-4416

Robert Moreland Memorial Building

Date	Time	Officer	Location	Incident
6/5/2001	00:11	Gerald Bass		
	02:08		Emergency Room	
	02:20		Front Lobby	
	02:35		ICU Waiting Area	
	02:46		Roof Exit	
	02:46			Door Unlocked
	02:57		4th Floor Stairwell, North	
	03:03		3rd Floor Stairwell, North	
	03:10		2nd Floor Stairwell, North	
	03:10			Broken Window
	03:17		2nd Floor Stairwell, South	
	03:26		3rd Floor Stairwell, South	
	03:32		4th Floor Stairwell, South	
	03:32			Light On Gauge is

Rule Itinerary Report for Robert Moreland Memorial Building

Location	Member of	Expected
ICU Waiting Area The button is on the doorframe next to the row of chairs by the far wall.	Robert Moreland Memorial Building	3
Admitting The button is to the right of the door on the far wall.	Robert Moreland Memorial Building	3



Rule Itinerary Report

This report is useful for showing a new officer how to do a patrol. For each rule associated with the selected client, facility, group, or location, this report shows the expected number of visits. It also includes all location details, including any notes you have entered. If you have added any photos or map images, these will also print, if the report style supports images.

Rule Exception Report

Shows all locations where the actual number of visits is different from the expected number.

Rule Exception Report for Fire Extinguisher Tour

From Date: Thursday, April 01, 2001
 To Date: Saturday, June 30, 2001 11:59:59 PM
 Filtered By: Fire Extinguisher Tour
 Grouped By: Rule, Client, Facility, Group
 Sorted By: Time, Location

Fire Extinguisher Tour

From Saturday, April 01, 2001 12:00:00 AM to Friday, June 30, 2001 11:59:59 PM

Location	Member of	Exception	Actual
00 - Annex	Fire Extinguisher	1	0
01 - Cafeteria	Fire Extinguisher	1	0
02 - West Entrance	Fire Extinguisher	1	0
03 - Garage	Fire Extinguisher	1	0
04 - Maintenance	Fire Extinguisher	1	0
05 - West Stairwell	Fire Extinguisher	1	0
06 - Waiting Room	Fire Extinguisher	1	0

Total for Fire Extinguisher Tour:
 Rules Processed: 1
 Time Periods Processed: 1
 Time Periods with Exceptions: 1
 Exceptions: 1

Report Cover Sheet for Building Tour

Report Printed: Monday, July 02, 2001

Presented To:

Chris Woodruff
 GEM Manufacturing, Inc.
 1368 Edgewater Drive
 Cleveland, Ohio 44221
 Phone: (216) 555-1100
 Fax: (216) 555-1116
 cwoodruff@gemmg.com

Presented By:

Jim Gregory
 Gregory Security and Investigation
 310 Lake Avenue
 Cleveland, Ohio 44101
 Phone: (216) 555-4300
 Fax: (216) 555-4416
 jgregory@metroclinic.com

Report Cover Sheet and Fax Cover Sheet

A cover sheet that can be included with other reports you send to clients or management.

Rule Activity Report

This report is identical to the Rule Exception Report, except that it includes all locations rather than only those with exceptions.

Rule Activity Report for Robert Moreland Memorial Building Tour

From Date: Monday, June 04, 2001 12:00:00 AM
 To Date: Monday, June 04, 2001 11:59:59 PM
 Filtered By: Robert Moreland Memorial Building
 Grouped By: Rule, Client, Facility, Group
 Sorted By: Time, Location

Robert Moreland Memorial Building

Robert Moreland Memorial Building Tour

From Monday, June 04, 2001 12:00:00 AM to Monday, June 04, 2001 11:59:59 PM

Location	Member of	Exception	Actual
2nd Floor Stairwell, North	Robert Moreland Memorial Building	3	3
2nd Floor Stairwell, South	Robert Moreland Memorial Building	3	3
3rd Floor Stairwell, North	Robert Moreland Memorial Building	3	3
3rd Floor Stairwell, South	Robert Moreland Memorial Building	3	3
4th Floor Stairwell, North	Robert Moreland Memorial Building	3	3
4th Floor Stairwell, South	Robert Moreland Memorial Building	3	3
Emergency Room	Robert Moreland Memorial Building	3	3
Front Lobby	Robert Moreland Memorial Building	3	3
ICU Waiting Room	Robert Moreland Memorial Building	3	3
Maintenance	Robert Moreland Memorial Building	3	3
Roof exit	Robert Moreland Memorial Building	3	3

Total for Robert Moreland Memorial Building:


Rule Summary Report for Health Services Building Tour

From Date: Saturday, June 02, 2001 12:00:00 AM
 To Date: Monday, June 05, 2001 11:59:59 PM
 Filtered By: Health Services Building
 Grouped By: Rule, Client, Facility, Group
 Sorted By: Time

Health Services Building

From	To	Rule Name	Exceptions
Monday 6/4/2001 00:00	Monday 6/4/2001 23:59	Health Services Building Tour	0
Tuesday 6/5/2001 00:00	Monday 6/5/2001 23:59	Health Services Building Tour	0
Monday 6/6/2001 00:00	Wednesday 6/6/2001 23:59	Health Services Building Tour	0
Monday 6/7/2001 00:00	Thursday 6/7/2001 23:59	Health Services Building Tour	0
Friday 6/8/2001 00:00	Monday 6/8/2001 23:59	Health Services Building Tour	0
Monday 6/11/2001 00:00	Monday 6/11/2001 23:59	Health Services Building Tour	0

Total for Health Services Building:
 Rules Processed: 1
 Time Periods Processed: 6
 Time Periods with Exceptions: 0
 Exceptions: 0



Rule Summary Report

A summary list of all rules, along with their time periods and total number of exceptions for the rule. This summary does not include information about the rules' locations.

How to Get More Information

If you would like more information about GUARD1 PLUS and THE PIPE, including any of the materials below, please contact our Sales Support Team.

GUARD1 PLUS CD

Try GUARD1 PLUS for thirty days — free!

With our demonstration CD, you can try GUARD1 PLUS for up to thirty days, free of charge. The CD contains:

- GUARD1 PLUS — a complete working copy of GUARD1 PLUS.
- Sample Database — a sample database with realistic information, so you can try all of GUARD1 PLUS's features.
- Product Documentation — complete product documentation is included in Windows Help format.
- Installation Guide — our full-color illustrated Installation Guide is provided in PDF format.



User Profiles

Learn how others have benefited by using THE PIPE.

Learn how other security professionals are using guard tour products from TimeKeeping Systems. Benefit from the experiences of others who are successfully using THE PIPE. These User Profiles cover a wide range of industries and applications.

Our Website

There's much more online at www.guard1plus.com!

Visit our website at www.guard1plus.com. Here's what you'll find there:

- The latest information about GUARD1 PLUS and THE PIPE.
- More detailed information about GUARD1 PLUS, including a software tour
- A free downloadable software demo.
- The latest User Profiles.



System Configuration and Specifications



A Complete GUARD1 PLUS System includes:



- One PIPE Touch Button Reader
- One Direct Downloader for THE PIPE with power adapter and serial cable to computer
- One Nylon Belt Holster for THE PIPE
- GUARD1 PLUS Program CD and Installation Guide
- GUARD1 PLUS Basic Module
- Rules and Advanced Reporting
- Data Maintenance
- 100 Plastic Mounts for four stations
- 110 Phillips Head Screws for Button Mounts
- Four Button Mount Covers
- 100 5mm Touch Memory Buttons
- 100 Adhesive Foam Disks for attaching Buttons
- One Leather Wallet
- Two Keyring Button Holders
- Ten Quick Set-Up Cards
- One Year of Software Support
- Three Year Hardware Warranty on THE PIPE
- One Year Battery Warranty on THE PIPE

Minimum System Requirements

Operating Systems Supported	Microsoft Windows 95 A or B Windows 98 Windows 98 Second Edition Windows Millennium Edition Windows NT 4 with Service Pack 4 Windows NT 2000 with Service Pack 1 Windows XP
Rules and Advanced Reporting	Requires Microsoft Word 97 or higher
CPU	Pentium or higher
Speed	266 Mhz
Disk Space	60 MB
Memory	32 MB RAM

PIPE Specifications

Mechanical	
Body	Corrosion resistant #304 stainless steel
Dimensions	6.65" length (16.89 cm) 1.46" width (3.71 cm)
Weight	12 oz. (373 g)
Ring Strength	100 lb. tensile load (45 kg)
Electrical	
Read Indicator	Bright red LED and loud buzzer
Data Collection	Durable touch memory button
Battery Capacity	100,000+ reads
Memory Capacity	4800+ reads
Communications	
Download Rate	115,200 baud
Download Time	Full PIPE in under 10 seconds
Data Communication	Bidirectional 57,600 baud
Environmental	
Operating Temperature	-4° to 122°F (-20° to 50°C)
Sealed Case	Tamper resistant, Water resistant
Shock	4' drop (1.22 m)
Altitude	Up to 10,000' (3048 m)

Direct Downloader Specifications

Mechanical	
Dimensions	2.32" height (5.9 cm) 4.25" width (10.79 cm) 6" depth (15.24 cm)
Weight	1 lb. (454 g)
Electrical	
Operating Voltage	9V DC
Environmental	
Operating Temperature	-4° to 122°F (-20° to 50°C)
Storage	-13° to 140°F (-25° to 60°C)
Relative Humidity	10 - 90%
Altitude	Up to 10,000' (3048 m)
Vibration (25 - 250Hz)	7G max.
Regulatory	
Emissions	FCC and CE approved
Conforms to	IEC 50082-1 IEC 801-2.1984 IEC 801-3.1984 IEC 801-4.1984 IEC 55022.198

All specifications are subject to change without notice.



**DANTZIGUIAN HRAYR
Automation Systems sarl**

RC:20094 - Baabda

TimeKeeping
Systems, Incorporated

Phone: +961 1 683 770 (3lines) / +961 3 655 965 / Fax: +961 1 683 769

P.O. Box: 55344 - Sin El Fil - Lebanon

Office: Dantziguian Hrayr Bldg, 171 Sami Solh Street, Mkalles

[http:// www.dhas.com.lb](http://www.dhas.com.lb)